



# Casserole De Shufflé

E♭ Alto Saxophone

Track 4.....Casserole De Shufflé (full performance)

Track 7.....Casserole De Shufflé (tenor sax play-along)

Skip Spratt

**Drum Intro** 2

3  $G^{13}$

7  $C^{13}$   $G^{13}$   $F\#^{13}$   $F^{14}$   $E^{13}$

11  $A^m9$   $D^{13}$   $A\#m9$   $D\#^{13}$  **Last X To Coda**

15  $A^m9$   $D^7$   $G^{13} / B$   $C^7$   $C\#0 D^7$   $D^7(\#9\#5)$

19  $F^{13}$   $F^{13}$  **Sax Solo 1st X, Guitar Solo, Bass Solo**

23  $F\#^{13}$  **D.S. w/ Repeats For Solos (No repeat on Bass Solo)**

27  $A^m9$   $D^7$   $G^{13} / B$   $C^7$   $C\#0 D^7$   $G^7$  *Rit...*



# Full Circle

E♭ Alto Saxophone

Track 5.....Full Circle (full performance)

Track 8.....Full Circle (tenor sax play-along)

Skip Spratt

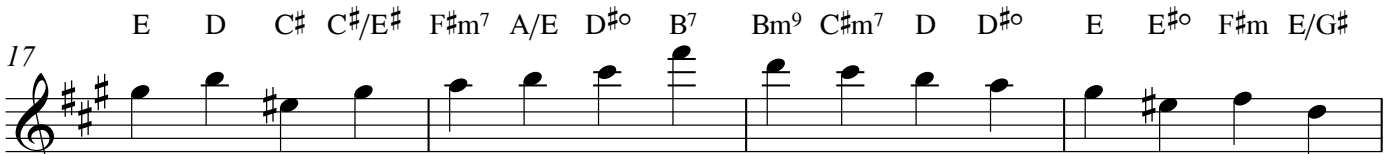
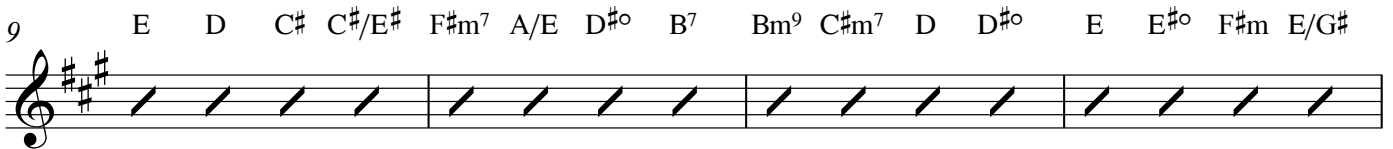
12/8 Feel ♩ = 106

## Drum Intro

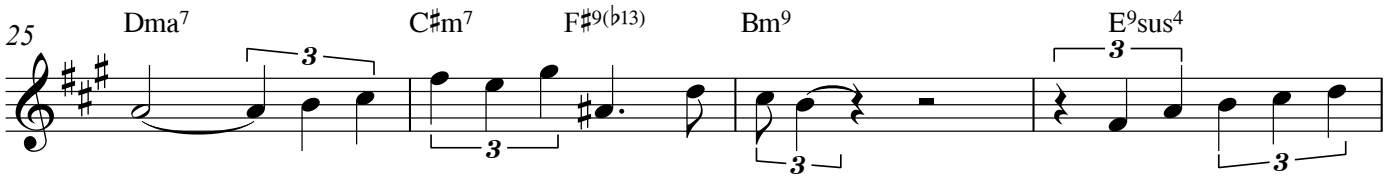
4



## Rhodes Only



## 1/2 Time Ballad Feel (Solos on Repeat)



© 2009, Full Circle by Skip Spratt, All Rights Reserved, Used By Permission

Alto Saxophone

33 Dma7 C#m7 F#7 Bm9 E13sus4 G13sus4

Melody In after Guitar Solo

37 C Bm7(b5) E7(b13b9) Am7 Am7 Abm7 Gm7 C7(b13#9)

41 Fma7 Em7 A7 Bm9 Bm9 E9sus4

Interlude

45 A A/C# D D#o A/E D A/C# E#+ F#m A/E D A/C# Bm C#m D D#o

49 E D C# C#/E# F#m7 A/E D#o B7 Bm9 C#m7 D D#o E E#o F#m E/G#

Vamp Out (Sax Solo, Bass Solo, Melody)

53 A A/C# D D#o A/E D A/C# E#+ F#m A/E D A/C# Bm C#m D D#o

57 E D C# C#/E# F#m7 A/E D#o B7 Bm9 C#m7 D D#o E E#o F#m E/G#



# Straight And Narrow

Track 6.....*Straight And Narrow* (full performance) Eb Alto Saxophone  
Track 9.....*Straight And Narrow* (tenor sax play-along)

Driving Rock ♩ = 96

Skip Spratt

## Drum Intro

2

## Guitar

3

5

## Verse 1/ Sax Solo

7 *A7(#9)*

9

11

13

## Bass, Guitar & Sax

15 *C#7(#9)*

2

**Verse 2/ Guitar Solo**

Alto Saxophone

A7(#9)

19

Musical staff for measures 19-21, featuring a complex melodic line with many accidentals and slurs.

22

Musical staff for measures 22-24, continuing the melodic line with various rhythmic patterns.

25

Musical staff for measures 25-26, ending with a fermata. The text "To Coda" is written above the staff.

**Chorus**

D.S. al Coda

27

A D A D

Musical staff for measures 27-30, featuring a simpler melodic line with accents. Chord symbols A and D are placed above the staff.

A D A D

Musical staff for measures 31-34, continuing the chorus melody with chord symbols A and D.

C#7(#9)

Musical staff for measures 35-38, featuring a rhythmic pattern with accents. Chord symbol C#7(#9) is placed above the staff.

Musical staff for measures 39-42, continuing the rhythmic pattern with accents.



C#7(#9)

**Guitar Solo**

C#7(#9)

**Sax Solo**

4

Musical staff for guitar and sax solos, consisting of a series of slanted lines representing sustained notes.

**Unison Riff**

C#7(#9)

Musical staff for unison riff, featuring a rhythmic pattern with accents. Chord symbol C#7(#9) is placed above the staff.

Musical staff for unison riff, continuing the rhythmic pattern with accents.