

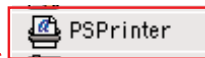
SET THE PRINTER/PPD MAC

Name	Date
Classic	Sat,
Classic Support	Thu,
Classic Support UI	Mon,
Clipboard	Today
CMSCP	Fri,
ColorSync Profiles	Tue,
Console	Tue,
Contextual Menu Items	Yeste
Control Panels	Yeste
Control Panels (Disabled)	Fri,
Control Strip Modules	Fri,
Extensions	Today
Extensions (Disabled)	Fri,
Favorites	Fri,

1

2

PS Printer gets installed
from the folder
“into extensions”
into the Extension folder



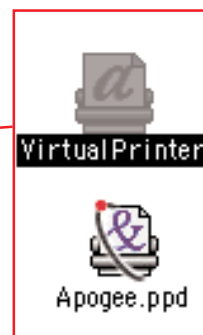
Setting up your system to generate a device independent PostScript file:

1. Locate the system folder inside the hard drive of your workstation. Inside the systems folder you will find a folder named Extensions.
2. Copy the “PS Printer from the supplied CD into the Extensions folder.
3. Locate a folder inside the Extensions folder named “Printer Descriptions”
4. Copy the “Virtual Printer” and the “Apogee.ppd also on the supplied CD, into the printer descriptions folder. Finally do a restart of your workstation.

PDFServices
PM7BibLib
Power On Extens
Printer Descrip
Acrobat Dis
Acrobat Dis
AdobePS
AGSSAY20.
Apogee.ppd
AVANTRA44L
Color Gener
CustomPage
FUJI_PICT

3

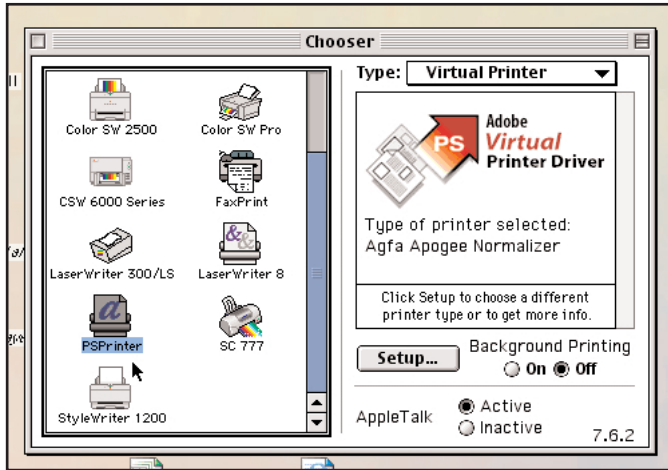
4



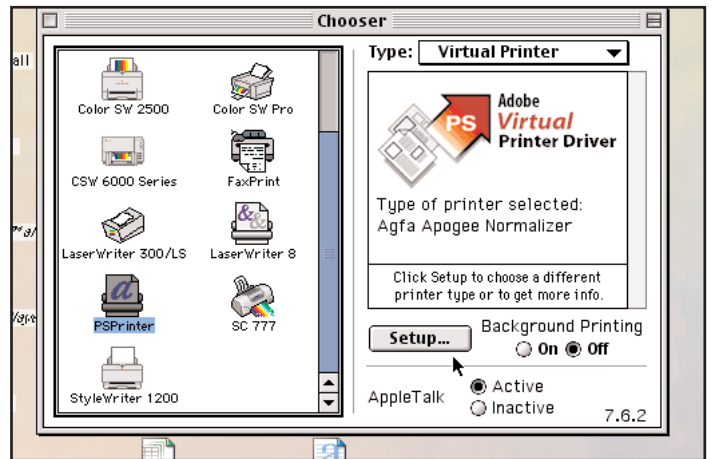
These two ppds are
copied from the
“Printer
Descriptions”
folder on the CD to
the “Printer
Descriptions”
folder inside your
extensions folder.

SET THE CHOOSE

1



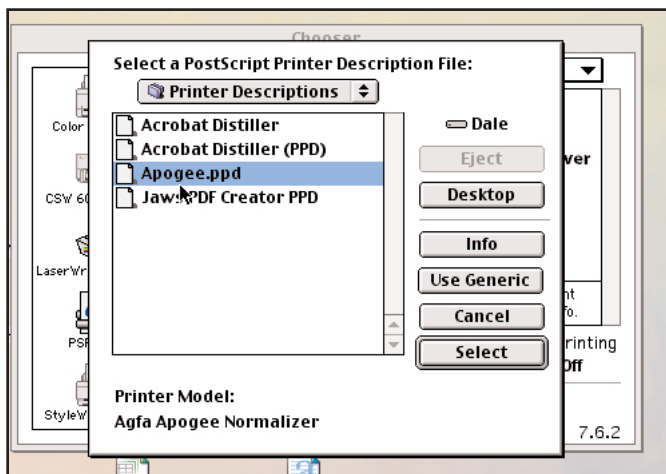
2



Selecting the Virtual Printer from the Chooser

1. Inside the Chooser you should now be able to select the PSPrinter, on the right of that window you will have the option of selecting a “ps printer” or a “virtual printer” choose the virtual printer.
2. Press the “Setup” button.
3. In the printer descriptions window choose the “Apogee.ppd”
4. You will receive a prompt telling you that there are no installable options click O.K.

3



4

