

New Orleans Grooves

Part 2

Masterclass CD By Jason Mingledorff

Eb Saxophone Parts
(pages 2, 3, 4, 5 in this PDF file)



NEW ORLEANS GROOVES: PART TWO

Track Title

- 1.....Introduction
- 2.....*Gentilly Mambo* spoken intro
- 3.....*Gentilly Mambo* full performance
- 4.....*Gentilly Mambo* play-along
- 5.....*Rockin' on the Levee* spoken intro
- 6.....*Rockin' on the Levee* full performance
- 7.....*Rockin' on the Levee* play-along
- 8.....*Hideaway Hill* spoken intro
- 9.....*Hideaway Hill* full performance
- 10.....*Hideaway Hill* play-along
- 11.....*Metery Metairie* spoken intro
- 12.....*Metery Metairie* full performance
- 13.....*Metery Metairie* play-along



CD track 2 (spoken intro)
 CD track 3 (full performance)
 CD track 4 (saxophone play-along)

Gentilly Mambo

(Eb saxophone part)

New Orleans Mambo (Rhumba)

Jason Mingledorff

D⁷ (INTRO) G⁷ D⁷ G⁷

(A) D⁷ (HEAD) G⁷ F⁷ B^{b7}

D⁷ G⁷ F⁷ B^{b7}

(B) E^{b7} (BRIDGE) A^{b7sus} A^{b7}

G⁷ C⁷ C^{#o7}

(C) D⁷ G⁷ F⁷ B^{b7}

D⁷ G⁷ To CODA ⊕ F⁷ B^{b7} (BACK TO A)

⊕ F⁷ B^{b7} D⁷

Rockin' On The Levee



CD track 5 (spoken intro)
CD track 6 (full performance)
CD track 7 (tenor saxophone play-along)

(Eb 'baritone' saxophone part)

Up-Tempo Rock 'n Roll

JASON MINGLEDORFF

(INTRO) 4 (HEAD) A⁷

A⁷

9

D⁷

13

A⁷

17

E⁷ D⁷ G⁷

21

A⁷

25

(INTRO) E⁷ D⁷ G⁷ G⁷

29

Rockin' On The Levee © copyright 2010 Not So Serious Music, Made in U.S.A., all rights reserved, international copyright secured, used by permission

Hideaway Hill

(Eb saxophone part)



CD track 8 (spoken intro)
CD track 9 (full performance)
CD track 10 (tenor saxophone play-along)

Slow 12/8 Rock 'n Roll

Jason Mingledorff

Chord progression: A^b D^b A^b (A) *f* D^b

Chord progression: A^b E^b7

Chord progression: A^b A^b D^b A^b7

Chord progression: D^b7 D^bDIM7 A^b

Chord progression: B^b7 E^b7

Chord progression: D^b A^b

Chord progression: E^b7 A^b D^b TO CODA ⊕ A^b

Chord progression: ⊕ A^b A⁷ A^b7

12/8

5

9

18

26

30

1.

2.

D.S. AL CODA

Metery Metairie

(Eb saxophone part)

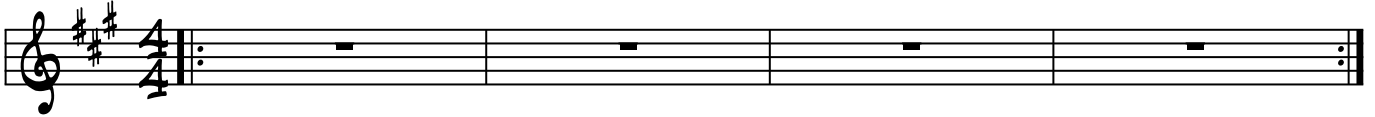


CD track 11 (spoken intro)
CD track 12 (full performance)
CD track 13 (alto/bari saxophone play-along)

Meters-Style Funk

Jason Mingledorff

E⁷



(A)

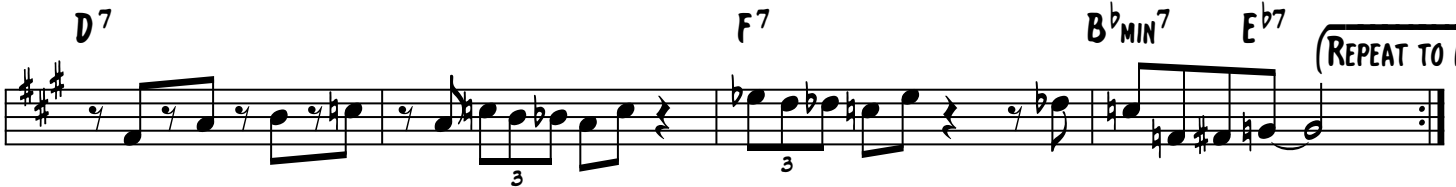
E⁷



(B)

D⁷

F⁷



(C)

E⁷ (CODA)



FORM: ABB

TO END: VAMP ON CODA (A SECTION)